

COMPLETE  **NEIGHBORHOODS INITIATIVE**



PARTNERSHIP PROGRAM UPDATE
April 5th, 2023 / 11 a.m. - 12:15 p.m.



AGENDA

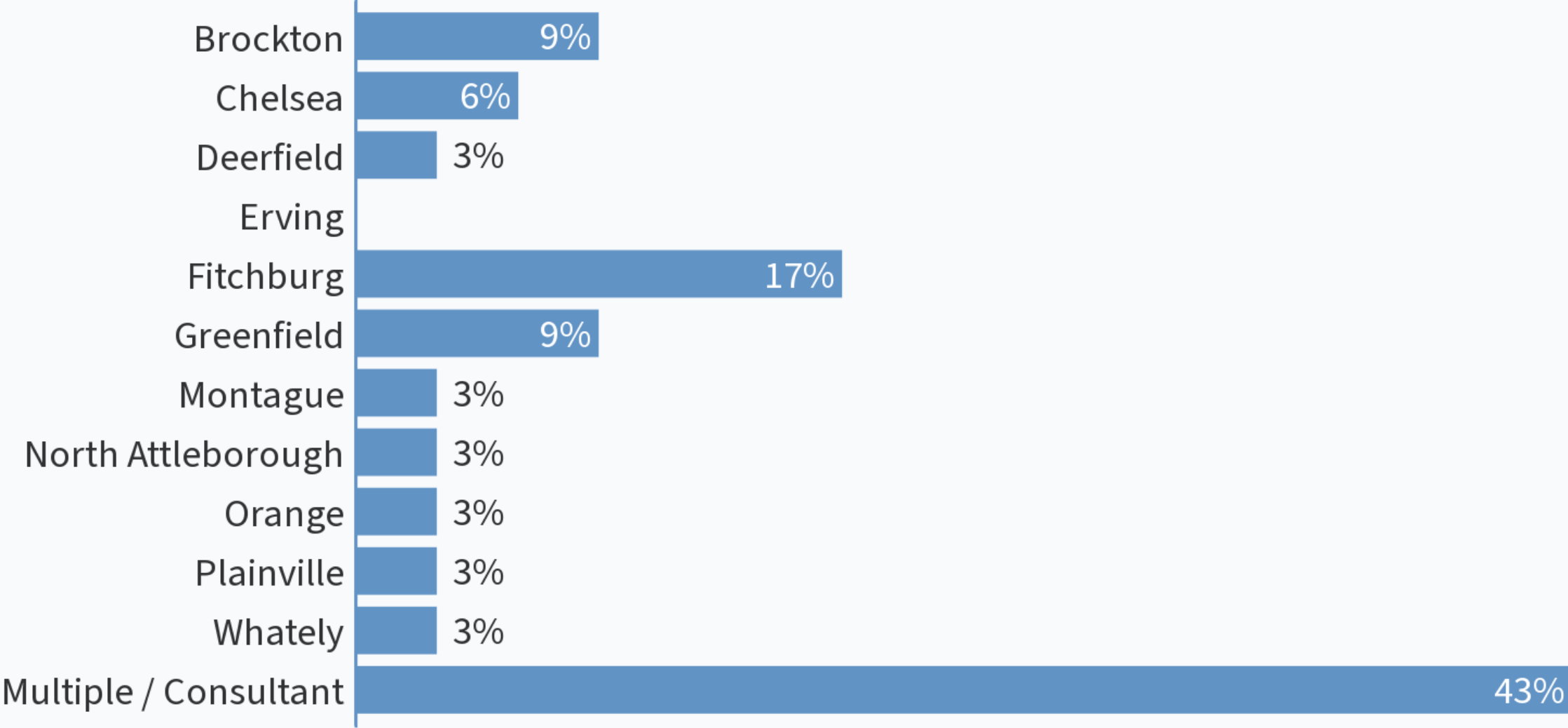
1. Who's in the room?
2. Program updates
3. Peer sharing
4. Looking ahead

Who's in the room?

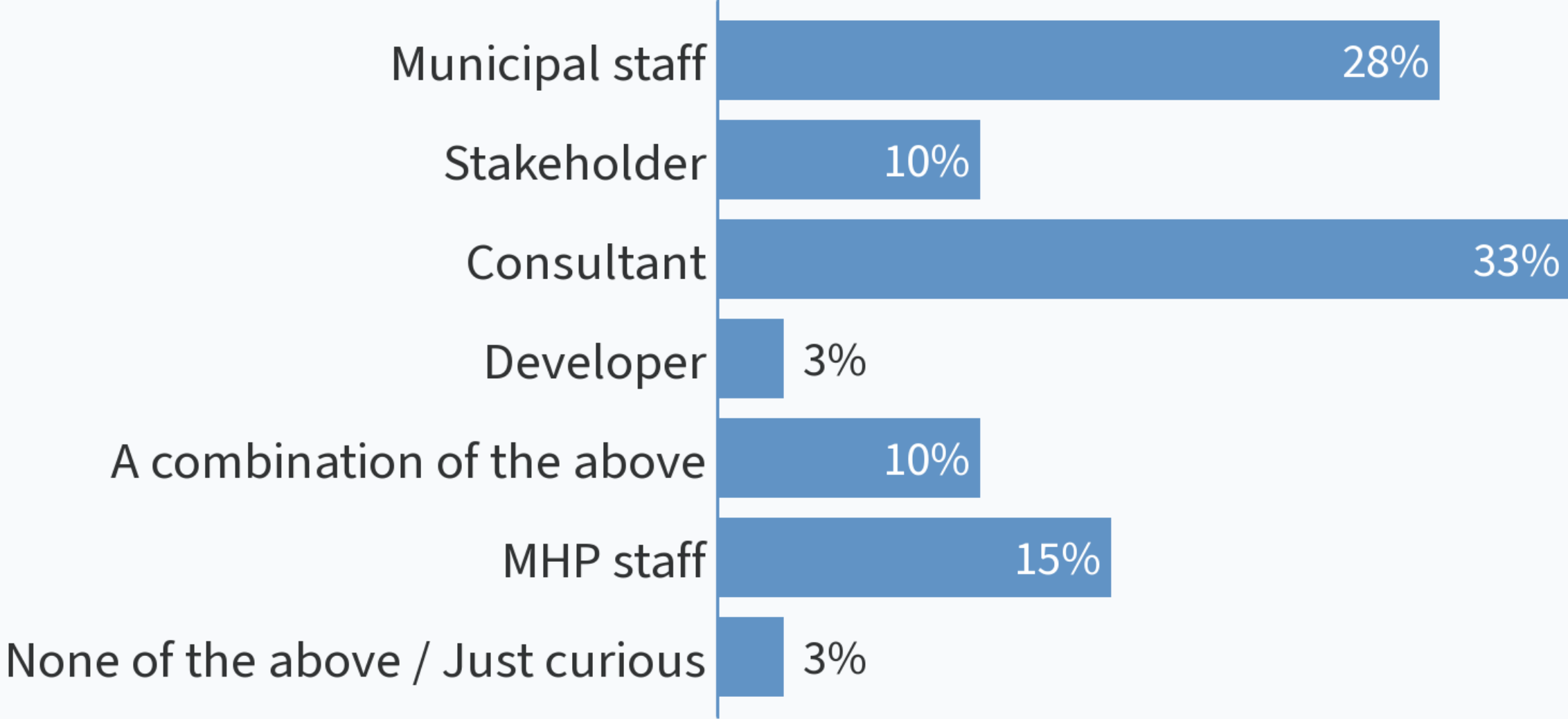
Go to **PollEv.com/cmadore552** to participate in the poll.

- Which CNP community do you represent or logging in from?
- What is your role relative to CNP?

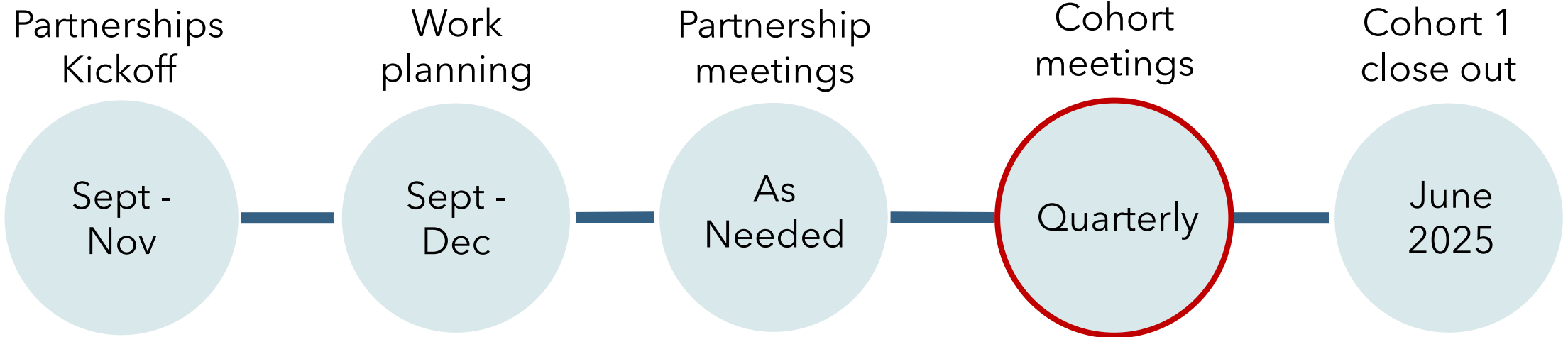
I represent / am logging in from:



My role relative to CNP:



Program Updates



Program Goals

1. Increase economic opportunity for disadvantaged populations
2. Create inclusive neighborhoods
3. Create dense, compact, connected neighborhoods
4. Reduce auto-dependency



WEST CHELSEA



West Chelsea

Barrett Planning Group

- MBTA Zoning Compliance
- Expansion of Transit-Oriented Development Overlay District
- Amend Urban Renewal Plan





FRANKLIN

CAMPELLO

SUNSET CAFE

TEN ISLANDS BOUTIQUE

SUNSET CAFE

LENA'S SALON

Brockton Campello

Studio Luz Architects

Innes Associates

RKG Associates

- Campello Neighborhood Masterplan
- MBTA Zoning Compliance
- Urban Renewal Plan
- Form-Based Code development
- District Improvement Financing

Personal Voice
Please tell us your thoughts.

What land uses would you like to see here?

FOOD / RESTAURANT Image of a restaurant interior with string lights.	COMMUNITY Image of people sitting on a bench in a community space.	RESIDENTIAL Image of a modern multi-story residential building.	INDUSTRIAL FOOD-BEV Image of an industrial food or beverage production facility.	MUNICIPAL USE Image of a modern municipal building interior.
RETAIL / GROCERY Image of a grocery store interior.	CHILDCARE / YOUTH Image of a childcare or youth center interior.	OFFICE SPACE Image of a modern office space.	RETAIL / PROFESSIONAL Image of a retail or professional office interior.	ARTIST / MAKER Image of an artist's studio or maker space.
BAR / CLUB Image of a bar or club interior.	CHAIN RETAIL Image of a chain retail store interior.	INDUSTRIAL / AUTO Image of an industrial auto repair shop.	SINGLE FAMILY HOUSING Image of a single family house.	OTHER? Blank space for other suggestions.

MAIN ST CORRIDOR - NILLSON - CHESTNUT ST

1 STORY COMMERCIAL	1 STORY COMMERCIAL	1 STORY COMMERCIAL	2 STORY COMMERCIAL	2 STORY MUNICIPAL	1 STORY RESIDENTIAL	1 STORY COMMERCIAL	3 STORY RESIDENTIAL
--------------------	--------------------	--------------------	--------------------	-------------------	---------------------	--------------------	---------------------

FITCHBURG



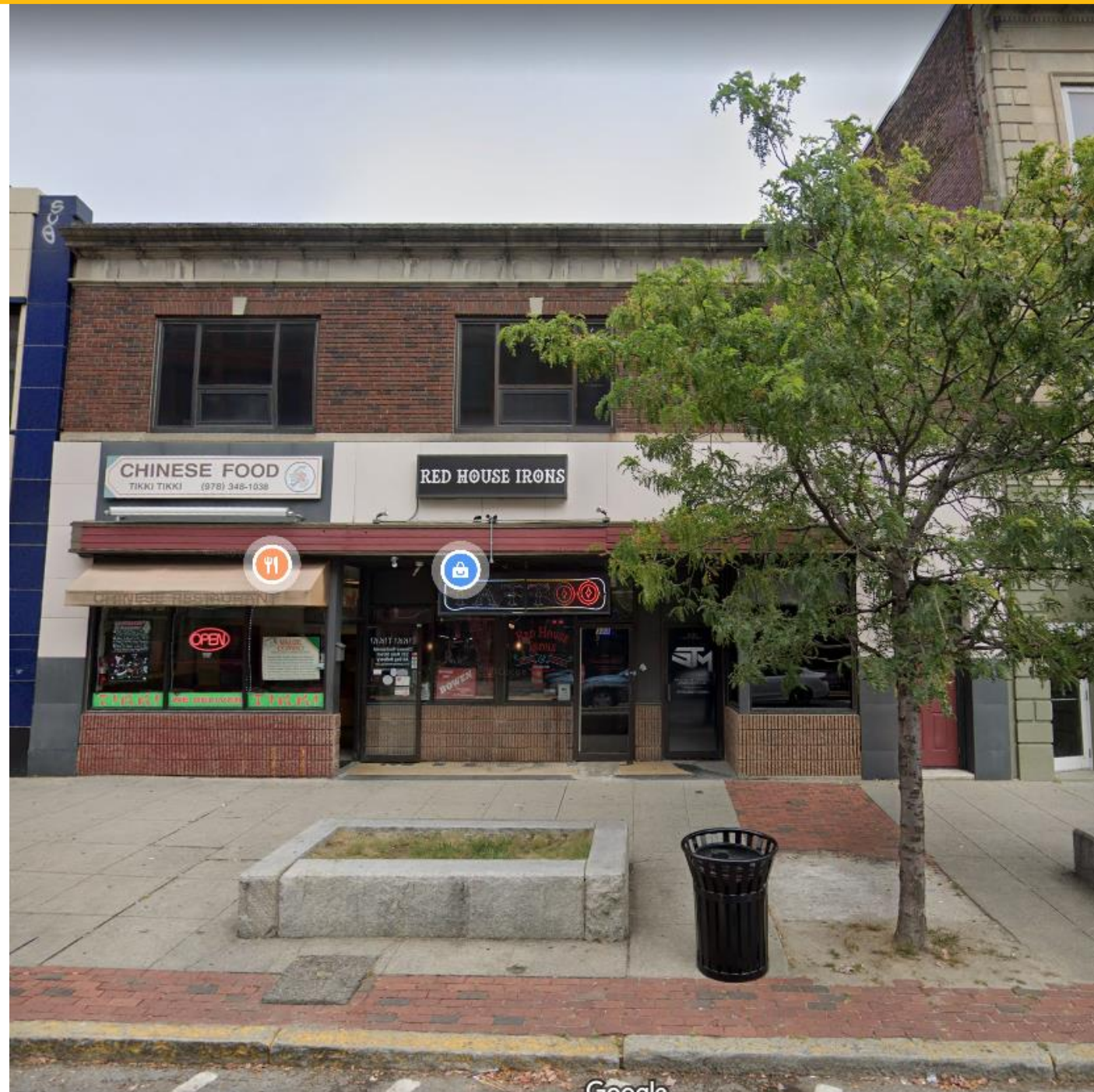
Fitchburg

SV Design

Stone Soup Collaborative

DREAM Collaborative

- MBTA Zoning Compliance
- 329 Main Street redevelopment



NORTH ATTLEBORO



PLAINVILLE



North Attleboro & Plainville

Kittelson Associates
DREAM Collaborative

Kelley Boulevard Master Plan



FRANKLIN COUNTY



Greenfield, Deerfield, Erving, Montague, Orange, and Whately

Franklin Regional Council of Governments

Regional Zoning Assessment & Housing Toolkit

Kuhn Riddle Architects VHB

Montague City
Village Plan



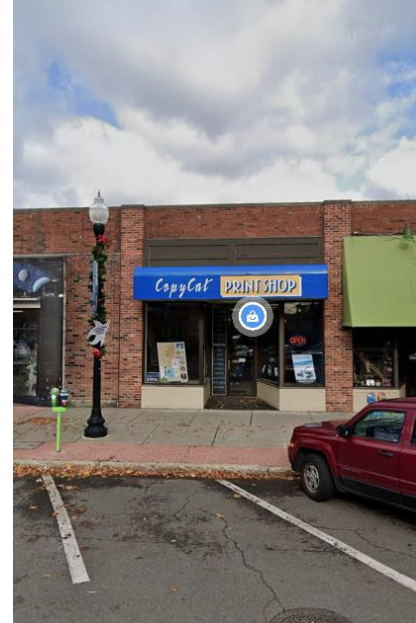
268 State Road
Whately
due diligence



Orange
Armory



176 Main Street
Greenfield
redevelopment



South
Deerfield
Municipal
Campus
Masterplan



Erving One
Care Drive RFP



Peer Sharing

- Questions / comments
- Are projects helping us advance program goals?
- What is going well so far / do more of?
- What can be improved?

Looking Ahead

- Continue to identify new project opportunities
- Round 2 opens fall of 2023
- Housing Bond Bill



Thank You!

Christine Madore
Senior Development Manager
cmadore@mhp.net
857-317-8538

